

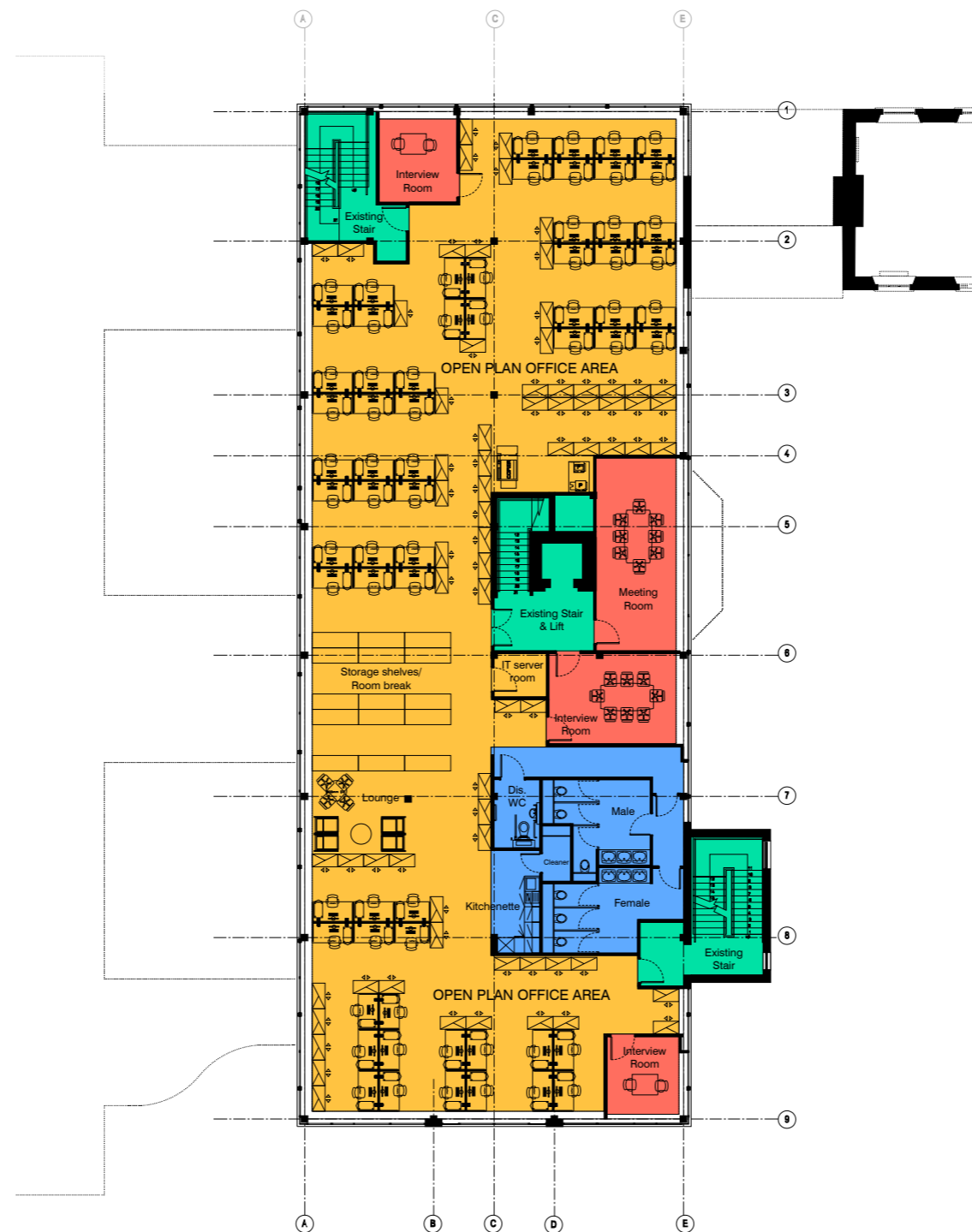
Commercial

# Wells Office Fit-Out

**Project details**  
Client: Assura Properties Limited  
Project Value: £162,000

This fast track fit-out of the top floor of a busy health centre was designed and project managed by SR Architects, delivering approximately 500m<sup>2</sup> of accommodation within a 6 week period. The facility includes a largely open plan office area, a series of meeting and interview rooms and a new pod of ancillary wc's, kitchenette and cleaner's room to be occupied by Somerset County Council's Children and Young People's Directorate, their Special Education Needs Service, and the Children with Disabilities Team.

The project involved considerable liaison with existing tenants, after hours deliveries of materials and weekend working in order to keep disruption of other facilities below this floor to a minimum and for health and safety and good working practice. The project was completed ahead of schedule and below the budget.



**OFFICE FIT-OUT FLOOR PLAN (not to scale)**

- Open plan office areas
- Enclosed meeting and interview rooms
- Services area
- Existing circulation lifts and stairs



Before



Six weeks after

Fit-out introduces open plan office space within a light and airy environment with bespoke finishes.

